

**WORLD CLASS  
OFFICE STORAGE  
SYSTEMS**



## ABOUT US

### Manufacturers of World Class Steel Storage Systems

Mercury Manufacturing Company Ltd. was established in the year 1992 in Chennai, India and is a fully owned subsidiary of Godrej & Boyce Manufacturing Co. Ltd. which is headquartered in Mumbai, India.

Mercury is into the business of manufacturing and supplying customized steel storage systems catering to all major industry segments in select territories across the world. We have built our stellar reputation on the ability to produce customized steel storage systems at an unmatched turnaround rate.

Mercury's product construction concept and supply chain method have resulted in a reduced carbon footprint.

#### Mission

To offer zero defect customized storage products to end-users and committed support for growth and ease of doing business to channel partners

#### Vision

To be a preferred provider of workspace storage solutions

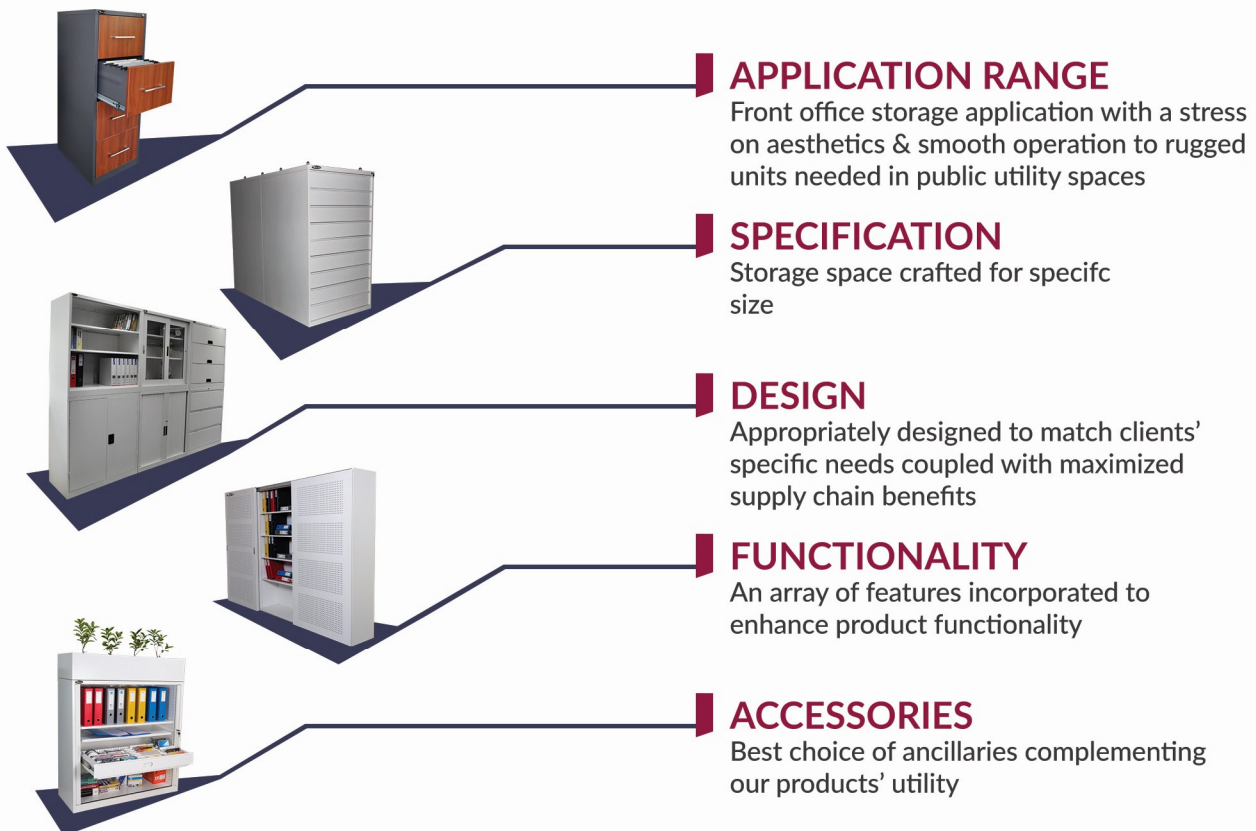
#### Brand Promise

Customized solutions and personalised services

## VERSATILITY IN PRODUCTS & CUSTOMIZATION

As a business strategy, we are persistently gearing to develop innovative products that address storage needs both on utility and aesthetics. We enhance our channel partners' competitiveness through customized product offerings.

All mercury products adapt to the flat pack concept of construction (complete knock down) making them easy to pack, ship and assemble.



CUSTOMIZATION

## MOBILE PEDESTALS



Product Code:  
M-PED-64-515-BBF

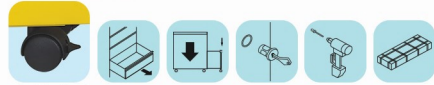
**AUSTRALIAN STANDARD**  
5079.3.2003(R2014)  
CERTIFIED

VARIANTS	PRODUCT CODE	OUTER DIMENSION
BBF	M-PED-64-515-BBF	635 x 470 x 515
FF	M-PED-64-515-FF	635 x 470 x 515
BBBB	M-PED-64-515-BBBB	635 x 470 x 515

### STORAGE SPACE

Box	105 x 380 x 395
File	235 x 380 x 395

### Standard Attributes



Lockable Castors

## PULL-OUT TOWER



Product Code: VPO-FEC-2AS-1AC

PRODUCT CODE	OUTER DIMENSION	SHELF DIMENSION
VPO-FEC-2AS-1AC	1250 x 400 x 875	W377 x D319

### Standard Attributes



### Options



## SLEEKLINE PEDESTALS



Product Code: SL-M-PED-BBF

VARIANTS	PRODUCT CODE	OUTER DIMENSION
BBF	SL-M-PED-BBF	610 x 460 x 472
FF	SL-M-PED-FF	610 x 460 x 472

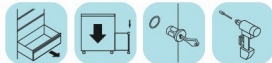
### STORAGE SPACE

Box	60 x 380 x 438
File	250 x 380 x 438

### Standard Attributes



Lockable Castors



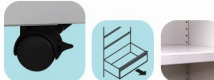
## CADDY



Product Code: SL-MCU-RS-BBF-PPT-WS-SDA

VARIANTS*	PRODUCT CODE	OUTER DIMENSION
Tambour Door with Right Drawer	SL-MCU-RS-BBF-PPT-WS-SDA	610 x 1050 x 472
Tambour Door with Left Drawer	SL-MCU-LS-BBF-PPT-WS-SDA	610 x 1050 x 472
Open Shelf with Right Drawer	MCU-RS-BBF-T-OS	610 x 1050 x 472
Open Shelf with Left Drawer	MCU-LS-BBF-T-OS	610 x 1050 x 472

### Standard Attributes

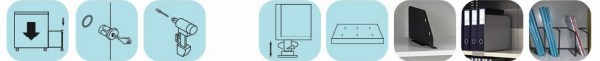


Lockable Castors

### STORAGE SPACE

Box	60 x 380 x 438
File	250 x 380 x 438
Shelf with Tambour Door	W 510 x D 414
Open Shelf	W 585 x D 434

### Options



\* while viewing the image

## HANDLE OPTIONS

PEDESTALS		
Handle Type	Code	Mobile
■ Full length Pull	T	Yes
■ Side Pull	SL	Yes
■ Recessed Pull	IA/IASP/IACO	Yes(S)



FULL LENGTH PULL

CODE: ANY OF THE BELOW  
WITHOUT COLOUR STRIP: T (S)  
WITH COLOUR STRIP: CS



RECESSED PULL

CODE: ANY OF THE BELOW  
SAME COLOUR: IA  
ALUMINIUM COLOUR: IASP (S)  
COLOUR OPTION: IACO

## LOCK OPTIONS

PEDESTALS		
Lock Type	Code	Mobile
■ Key Lock	FL	Yes(S)
■ Electronic Number Lock	EL	Yes



KEY LOCK



ELECTRONIC NUMBER LOCK



# FILING CABINETS



Product Code: 5DFCM-Lg



Product Code: 4DFCM-Lg



Product Code: 3DFCM-Lg



Product Code: 2DFCM-Lg

## ANSI BIFMA

X5.3-2007, X5.9-2004  
CERTIFIED

## AUSTRALIAN STANDARD

5079.2:2003  
CERTIFIED

## BRITISH STANDARD

4875-7:1998, 4875-8:1998  
CERTIFIED

VARIANTS	PRODUCT CODE	OUTER DIMENSION	STORAGE SPACE
2 Drawers	2DFCM-Lg	710 x 470 x 620	255 x 375 x 550
	2DFCM-Lt	710 x 395 x 620	255 x 300 x 550
3 Drawers	3DFCM-Lg	1015 x 470 x 620	255 x 375 x 550
	3DFCM-Lt	1015 x 395 x 620	255 x 300 x 550
4 Drawers	4DFCM-Lg	1320 x 470 x 620	255 x 375 x 550
	4DFCM-Lt	1320 x 395 x 620	255 x 300 x 550
5 Drawers	5DFCM-Lg	1625 x 470 x 620	255 x 375 x 550
	5DFCM-Lt	1625 x 395 x 620	255 x 300 x 550

## DESIGN VARIANT

Drawers with Wooden Finish

Product Code: 4DFCM-Lg wooden front



### Standard Attributes



### Options



## HANDLE OPTIONS



RECESSED PULL (S)

CODE: ANY OF THE BELOW  
SAME COLOUR: IA  
ALUMINIUM COLOUR: IASP (S)  
COLOUR OPTION: IACO



FULL LENGTH PULL

CODE: ANY OF THE BELOW  
WITHOUT COLOUR STRIP: T (S)  
WITH COLOUR STRIP: CS



ALUMINIUM HANDLE

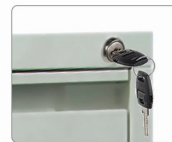
CODE: AH



SS BOW HANDLE

CODE: BH

## LOCK OPTIONS



KEY LOCK (S)

CODE: FL



ELECTRONIC NUMBER LOCK

CODE: EL

# LATERAL FILING CABINETS

**ANSI BIFMA**  
X5.9-2004, X5.3-2007  
CERTIFIED

**AUSTRALIAN STANDARD**  
5079.1:2003(R2014)  
CERTIFIED



Product Code: LF5M

Product Code: LF4M

Product Code: LF3M

Product Code: LF2M

VARIANTS	PRODUCT CODE	OVERALL DIMENSION	STORAGE SPACE
2 Drawers	LF2B	710 x 1066 x 463	245 x 972 x 395
	LF2M	710 x 914 x 463	245 x 820 x 395
	LF2S	710 x 762 x 463	245 x 668 x 395
3 Drawers	LF3B	1015 x 1066 x 463	245 x 972 x 395
	LF3M	1015 x 914 x 463	245 x 820 x 395
	LF3S	1015 x 762 x 463	245 x 668 x 395
4 Drawers	LF4B	1320 x 1066 x 463	245 x 972 x 395
	LF4M	1320 x 914 x 463	245 x 820 x 395
	LF4S	1320 x 762 x 463	245 x 668 x 395
4 Drawers with 5th Flipper door	LF5B	1770 x 1066 x 463	245 x 972 x 395, FD 350 x 1018 x 438
	LF5M	1770 x 914 x 463	245 x 820 x 395, FD 350 x 866 x 438
	LF5S	1770 x 762 x 463	245 x 668 x 395, FD 350 x 714 x 438

**Standard Attributes**



File Hanger & Cradle Frame for legal size files

**Options**



Counter Weight  
CODE: CWT

Flipper Door with Pull-out Tray  
CODE: PT

Dual Cradle Frames for A4 size files  
CODE: CF

**HANDLE OPTIONS**



RECESSED PULL (S)

CODE: ANY OF THE BELOW  
SAME COLOUR: IA  
ALUMINIUM COLOUR: IASP (S)  
COLOUR OPTION: IACO



FULL LENGTH PULL

CODE: ANY OF THE BELOW  
WITHOUT COLOUR STRIP: T (S)  
WITH COLOUR STRIP: CS



ALUMINIUM HANDLE

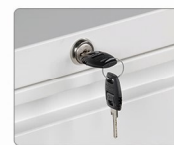
CODE: AH



SS BOW HANDLE

CODE: BH

**LOCK OPTIONS**



KEY LOCK (S)

CODE: FL



ELECTRONIC NUMBER LOCK

CODE: EL

## SWING DOOR CUPBOARDS

### ANSI BIFMA

X5.9-2004  
CERTIFIED

(only for STM series)

### PRODUCT VARIANT

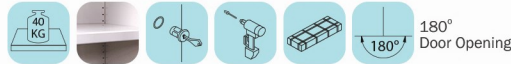
Ready To Assemble (RT)



Product Code: STM3

VARIANTS	PRODUCT CODE		OVERALL DIMENSION	STORAGE SPACE	
	STM SERIES	RT SERIES		STM SERIES	RT SERIES
Extra Full Height	STM4	RT4	2000 x 914 x 463	W 910 x D 429	W 910 x D 402
Full Height	STM3	RT3	1830 x 914 x 463	W 910 x D 429	W 910 x D 402
Counter Height	STM1	-	1320 x 914 x 463	W 910 x D 429	-
Counter Height	STMA	RTA	1015 x 914 x 463	W 910 x D 429	W 910 x D 402

#### Standard Attributes - all products



Construction requires only Fastener

#### Options - all products



Product Code: RT3



## SLIDING DOOR CUPBOARDS



Product Code: FSLDG1

VARIANTS	PRODUCT CODE		OVERALL DIMENSION	STORAGE SPACE
	GLASS DOOR	STEEL DOOR		
Extra Full Height	FSLDG2	FSLDS2	2000 x 1200 x 450	1196 x 362
Full Height	FSLDG1	FSLDS1	1830 x 914 x 463	910 x 375
	FSLDG3	FSLDS3	1830 x 1500 x 463	1496 x 375
Special Counter Height	HSLDG4	HSLDS4	1320 x 914 x 463	910 x 375
	HSLDG5	HSLDS5	1320 x 1500 x 463	1496 x 375
Counter Height	HSLDGA	HSLDSA	1015 x 914 x 463	910 x 375
	HSLDG3	HSLDS3	1015 x 1500 x 463	1496 x 375

#### Standard Attributes - all products



Toughened Glass for Glass Door only

#### Options - all products



### DESIGN VARIANT

Steel Sliding Door

Product Code: FSLDS1



## TAMBOUR DOOR CUPBOARDS

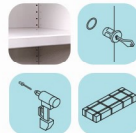


Product Code: TDM4 with Options

VARIANTS	PRODUCT CODE	OVERALL DIMENSION	STORAGE SPACE
Full Height	TDM4	2000 x 1200 x 463	1050 x 416
	TDM3	2000 x 1000 x 463	850 x 416
	TDM3A	2000 x 900 x 463	750 x 416
Counter Height	TDM2	1320 x 1200 x 463	1050 x 416
	TDM1	1320 x 1000 x 463	850 x 416
	TDM1A	1320 x 900 x 463	750 x 416

- Other Height options are 1200, 1015 and 1000
- All products are available in widths of 1200, 1000 and 900

#### Standard Attributes



#### Options

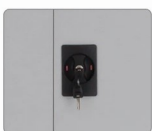


### AUSTRALIAN STANDARD

AS/NZS 4790:2006  
CERTIFIED

### HANDLE OPTIONS

HANDLE TYPE	CODE	SWING DOOR
Plastic Flush Handle integrated with Lock	P	Yes (S)
Aluminium	AH	Yes



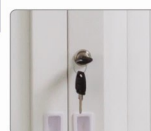
PLASTIC FLUSH HANDLE WITH LOCK  
CODE: P



ALUMINIUM HANDLE  
CODE: AH

### LOCK OPTIONS

LOCK TYPE	CODE	TAMBOUR CUPBOARD
Key Lock	FL	Yes (S)
Electronic Number Lock	EL	Yes



KEY LOCK  
CODE: FL



ELECTRONIC NUMBER LOCK  
CODE: EL



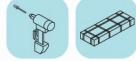
## PLAN FILING CABINETS



Product Code: 6A0HPFC-PH

PRODUCT CODE	OVERALL DIMENSION	STORAGE SPACE
6A0HPFC-PH	628 x 1375 x 960	75 x 1274 x 892
AOVDSC-10HC	1420 x 410 x 1015	-

Standard Attributes - both variants



Options of 6A0HPFC-PH



Stand  
CODE: B

### PRODUCT VARIANT

Vertical Plan Filing Tower



Product Code: AOVDSC-10HC

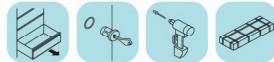
## MULTIMEDIA FILING CABINETS



Product Code: MMC-7H

VARIANTS	PRODUCT CODE	OVERALL DIMENSION	STORAGE SPACE
Multimedia Cabinet	MMC-7H	1320 x 790 x 620	155 x 695 x 550
Card Index Cabinet	CIC-8X2	1490 x 540 x 620	135 x 445 x 550
Microfiche Cabinet	LC-10H	1370 x 700 x 620	110 x 615 x 550

Standard Attributes - all variants



Handle Options



Full Length Pull  
CODE: ANY OF THE BELOW  
WITHOUT COLOUR STRIP: T (S)  
WITH COLOUR STRIP: CS



Recessed Pull (S)  
CODE: ANY OF THE BELOW  
SAME COLOR: IA  
METALLIC COLOR: IASP (S)  
COLOR OPTION: IACO

Options



For MMC-7H  
CODE: CD-Insert

### DESIGN VARIANT

Card Storage Cabinet



Product Code: CIC 8x2

Dimensions in H x W x D | Measurements in mm | (S) - Standard Offering

## LEGEND



Anti Tilt  
Mechanism



Adjustable Shelf



Pop-rivet  
Construction



Leveller  
CODE: HA



Sliding Shelf Divider  
CODE: ADP



Front Caster for  
Anti Tilt



40KG Uniformly  
Distributed Shelf Load



Complete  
Knockdown



Slotted Shelf  
CODE: SS



Toast Rack  
CODE: TR



Full Drawer  
Accessibility



Barrel Exchangeable  
Lock

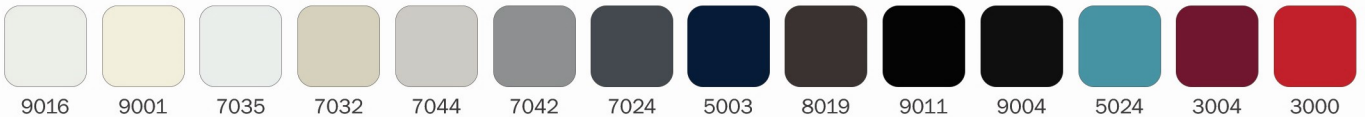


Slotted Shelf Divider  
CODE: SD



Planter Box  
CODE: PB

## CLASSIC SHADES [COLOUR CODE IN RAL]



Refer to our SHADE CARD for the complete range of 50 standard colours and types of surface finishes.

## DISCLAIMER

- In pursuit of constant product development and design, the company reserves the right to amend, alter, modify or discontinue product, configuration or color without prior notice.
- All measurements are subject to tolerance level of  $\pm 2\text{mm}$  or  $\pm 5\%$  as the case maybe.
- Optional features/accessories, non-standard powder coating shades/finish/property are available at additional cost and may require extra delivery period.
- Colour shades shown in this Catalogue may not truly correspond to actual shade due to limitations of printing/electronic display units.
- The product images are only representative and the actual products delivered will correspond to item codes and or descriptions used.



## **MERCURY MANUFACTURING COMPANY LTD.**

A fully owned subsidiary of Godrej & Boyce Mfg. Co. Ltd.

Registered Office & Works: D3, MEPZ - Special Economic Zone, Tambaram, Chennai - 600045, INDIA

Phone: +91 - 44 - 22628002, 22628593 | Fax: +91 - 44 - 22628344

E-mail: [sales@mercuryfurniture.com](mailto:sales@mercuryfurniture.com) | Web: [www.mercuryfurniture.com](http://www.mercuryfurniture.com)

